

# VIP STARTER GUIDE



Support:  
support@nakamichi-usa.com  
(415) 805 6913



Movies and Netflix Shows with the Best Surround Sound



Best Way to Enjoy Dolby Atmos Audio



Unboxing & 1st Time Setup Tutorial



Frequently Asked Questions



Product Registration



User Manual



Perform Soundbar Reset

1

## BEST CONNECTION

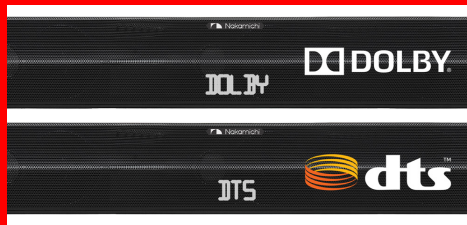
HDMI 2.0 High Speed (Recommended) or Optical Cable for full audio quality



2

## BEST AUDIO

Ensure the soundbar is receiving Dolby/DTS content for best audio



3

## BEST SURROUND

Use Dolby Surround / Neural X to enable all-channel surround effects



For Dolby/PCM content:  
**DOLBY SURR**  
(To enable surround for all channels)

For YouTube™/ Bluetooth content:  
**ALL CH STEREO**  
(To enable Stereo playback on surround speakers)

Always use HIGH SPEED 4K HDMI 2.0 cable for best audio and video quality. [Click to learn more >](#)

# 1. BEST CONNECTION

Use HDMI to enjoy best multi-channel surround audio



BETTER: Optical connection

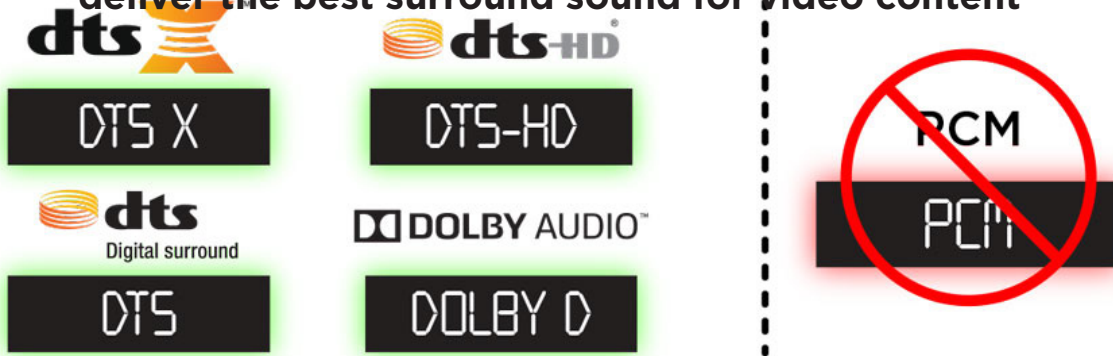
BEST: HDMI connection

Analog audio (3.5mm jack) supports 2-channel content with NO true discrete surround sound



# 2. BEST AUDIO

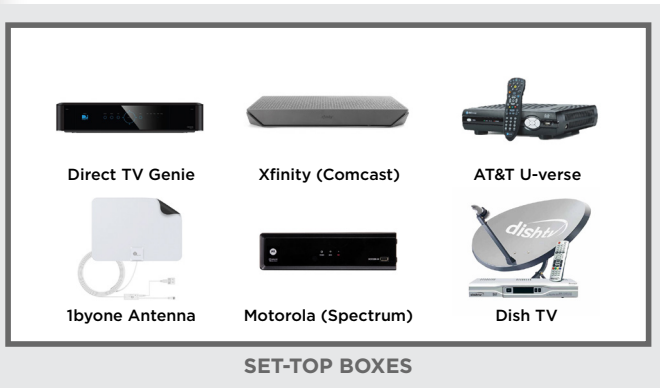
Dolby and DTS encoded soundtracks deliver the best surround sound for video content\*\*



Audio format availability varies by content and devices.  
\*\* refer to the INFO button on remote section below

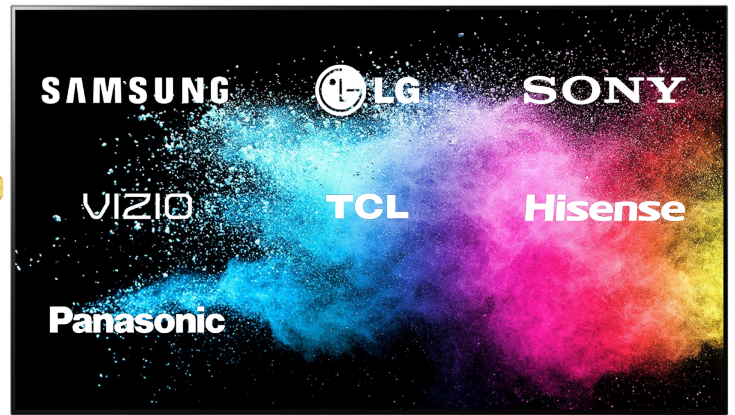
## CONNECTIONS CENTRAL

Click DEVICE below to see step-by-step connection instructions



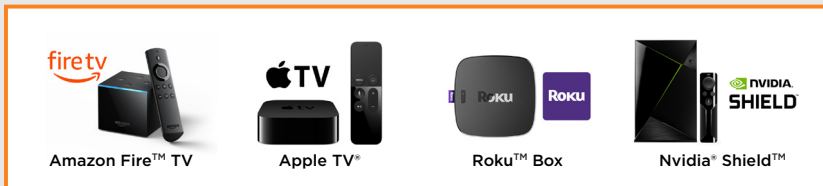
SET-TOP BOXES

CONNECT THESE DEVICES DIRECTLY TO YOUR TV VIA HDMI



CONNECT TV HDMI ARC to SOUNDBAR HDMI 1 ARC

CONNECT THESE DEVICES DIRECTLY TO YOUR SOUNDBAR VIA HDMI



STREAMING DEVICES



STREAMING STICKS



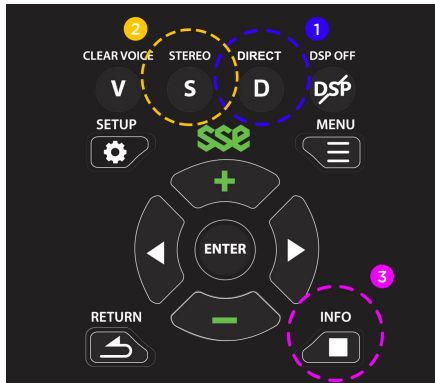
DISC PLAYERS



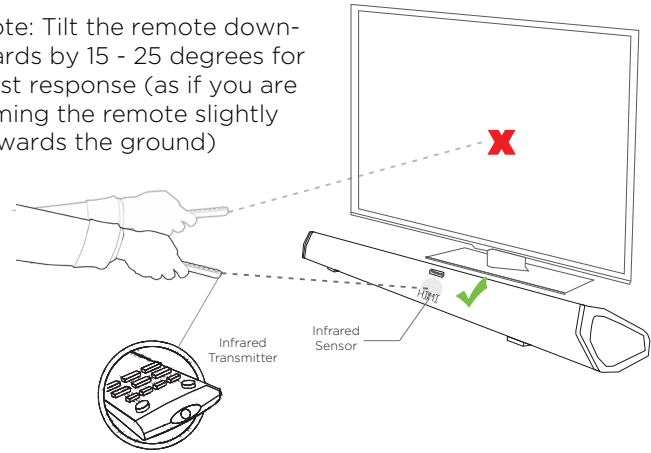
GAMING CONSOLES

# 3. BEST SURROUND

Use the **DIRECT** or **STEREO** button to toggle between the various surround modes for your desired experience



Note: Tilt the remote downwards by 15 - 25 degrees for best response (as if you are aiming the remote slightly towards the ground)



**1 DIRECT**  
For video content, set **DIRECT** mode to "DOLBY SURROUND" (for Dolby and PCM content) or "NEURAL X" (for DTS content) to get sound from all surround speakers

**2 ALL CH STEREO**  
Enables Stereo playback on surround speakers. Best for music, YouTube™ by boosting volume level of surround speakers

**3 \*\* INFO**  
Press once or twice to see the source audio format on the soundbar LED display: DOLBY ATMOS, DOLBY D PLUS, DTS, etc.

## ROOM SIZE & SPEAKER PLACEMENT



**ONE BUTTON ROOM OPTIMIZATION**  
Optimize your surround sound based on preconfigured volume settings for **Small (14 x 14ft)**, **Medium (18 x 18ft)** and **Large (22 x 22ft)** room sizes

**SPEAKER PLACEMENT**  
Subwoofer: Move them closer to the TV/front of the room for enhanced performance.

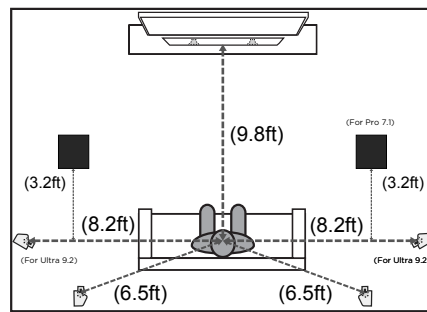
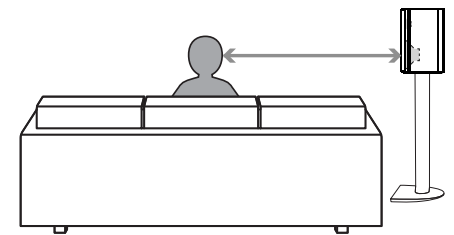


Illustration above is for **MEDIUM** room size (18 x 18ft)

For **SMALL** room (14 x 14ft):  
Distance to soundbar / side surrounds: 6.5 ft  
Distance to rear surrounds: 5 ft

For **LARGE** room (22 x 22ft):  
Distance to soundbar: 12.1 ft  
Distance to side surrounds: 9.8 ft  
Distance to rear surrounds: 8.2 ft



NOTE: The bottom speaker driver of the surround speakers should be at ear level and pointing directly at the listener's sitting area for optimal performance.

**ADVANCED FEATURES**

What is **HDMI CEC**  
HIGH-DEFINITION MULTIMEDIA INTERFACE

How to Setup **HDMI CEC**  
HIGH-DEFINITION MULTIMEDIA INTERFACE

**Talk to Our Nakamichi Ninjas**

support@nakamichi-usa.com OR (415) 805 6913

Weekdays: 10am - 7pm PST; Weekends: 10am - 5pm PST